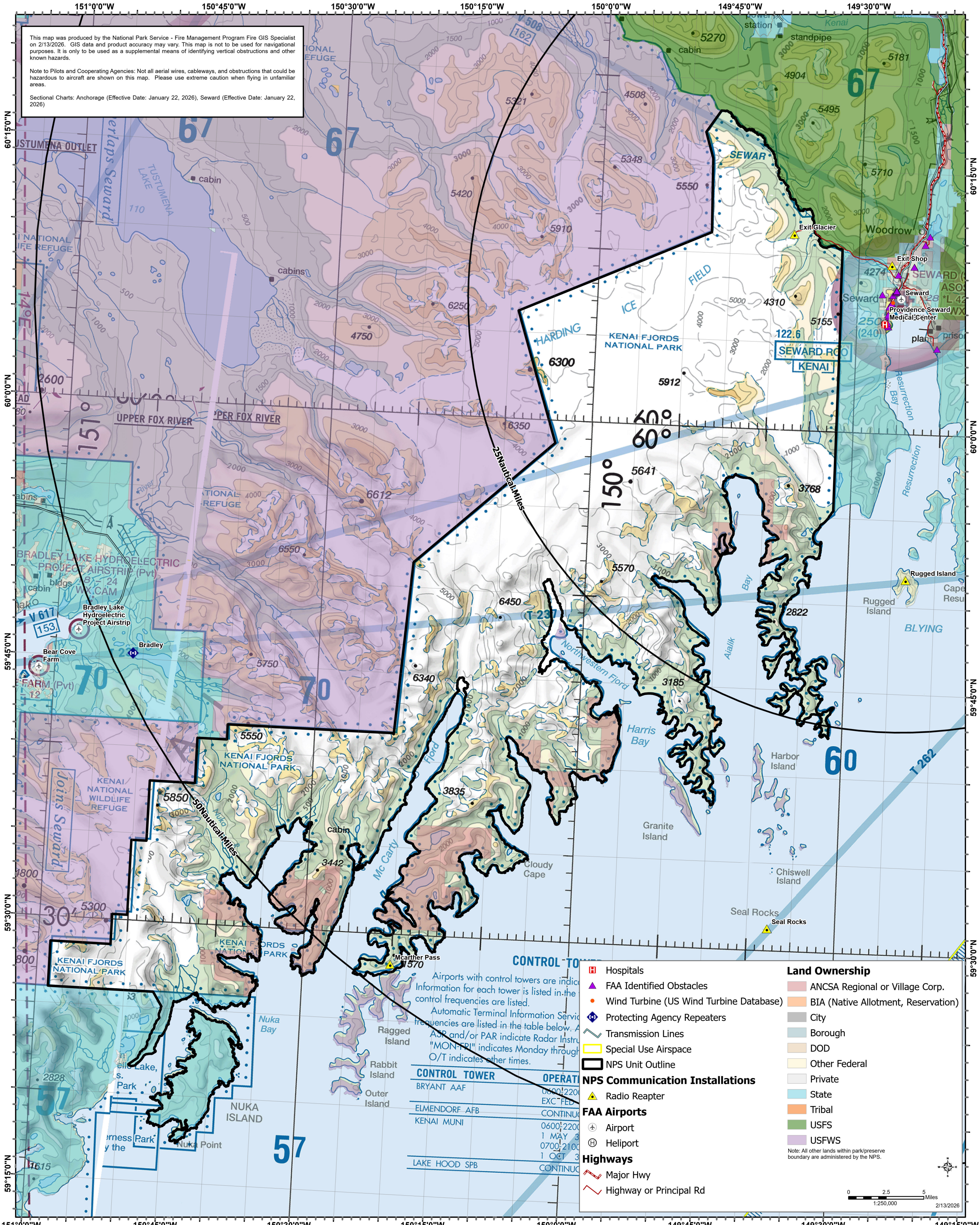


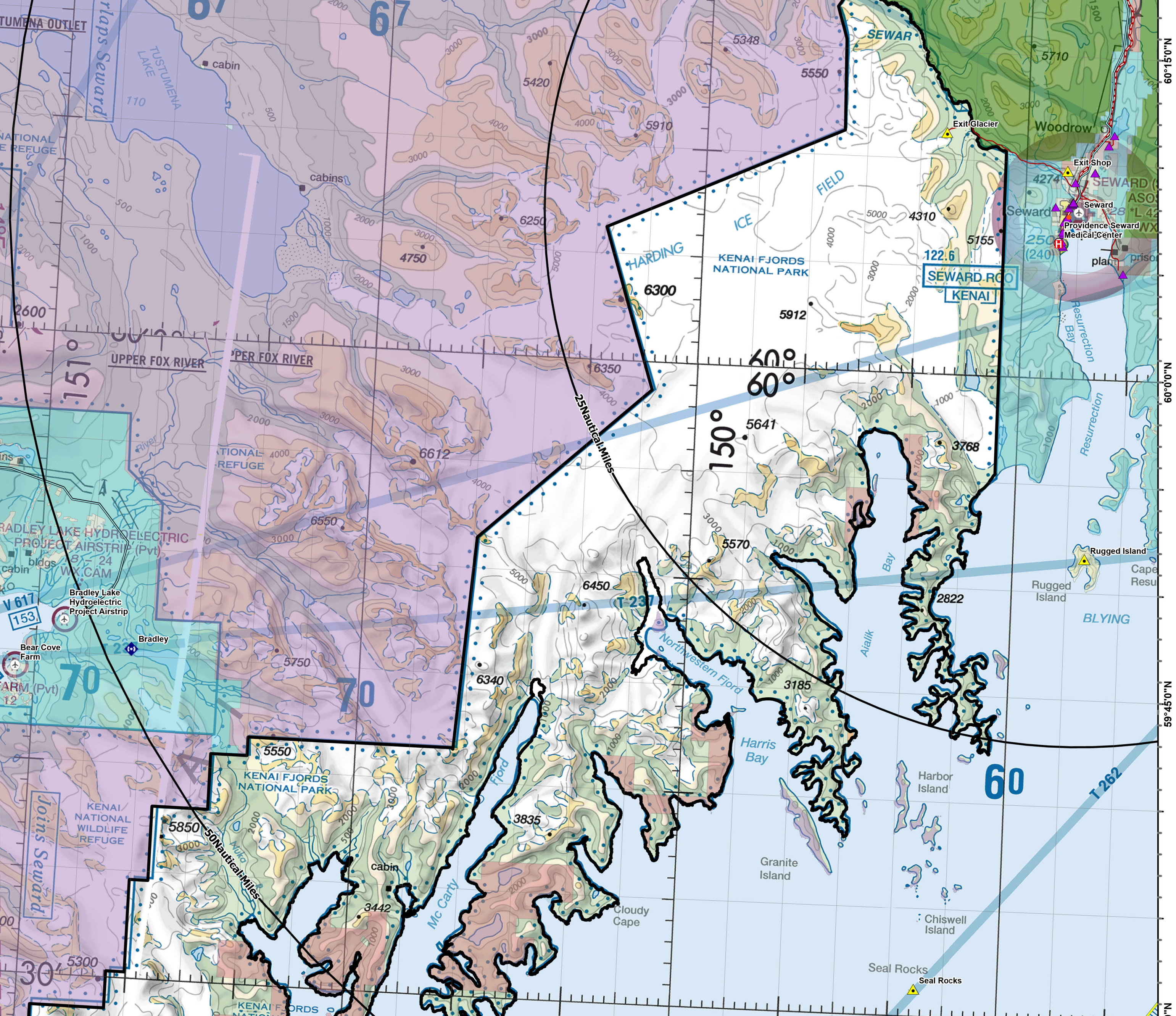
Kenai Fjords National Park (AK-KEP)
Wildland Fire Management - Known Aviation Hazards - 2026



This map was produced by the National Park Service - Fire Management Program Fire GIS Specialist on 2/13/2026. GIS data and product accuracy may vary. This map is not to be used for navigational purposes. It is only to be used as a supplemental means of identifying vertical obstructions and other known hazards.

Note to Pilots and Cooperating Agencies: Not all aerial wires, cableways, and obstructions that could be hazardous to aircraft are shown on this map. Please use extreme caution when flying in unfamiliar areas.

Sectional Charts: Anchorage (Effective Date: January 22, 2026), Seward (Effective Date: January 22, 2026)



CONTROL TOWER
 BRYANT AAF
 ELMENDORF AFB
 KENAI MUNI
 LAKE HOOD SPB

OPERATIONS
 0600:2200
 EXC-FEL
 CONTINU
 0600:2200
 1 MAY 3
 0700:2100
 1 OCT 3
 CONTINU

Airports with control towers are indicated. Information for each tower is listed in the table below. Control frequencies are listed. Automatic Terminal Information Service frequencies are listed in the table below. AASR and/or PAR indicate Radar Instrument Flight Rules. "MON-FRI" indicates Monday through Friday. O/T indicates other times.

	Hospitals		Land Ownership
	FAA Identified Obstacles		ANCSA Regional or Village Corp.
	Wind Turbine (US Wind Turbine Database)		BIA (Native Allotment, Reservation)
	Protecting Agency Repeaters		City
	Transmission Lines		Borough
	Special Use Airspace		DOD
	NPS Unit Outline		Other Federal
	Radio Repeater		Private
	FAA Airports		State
	Heliport		Tribal
	Highways		USFS
	Highway or Principal Rd		USFWS

Note: All other lands within park/preserve boundary are administered by the NPS.

